



BEARING & TOOLS

2024



STRUCTURE TECHNOLOGY

JETSTREAM PRO

Jetstream Pro Series stands for Rotation Optimized Ceramic Technologies. Because it takes more than just ceramic balls to minimize friction and gain watts. It's about the composition of race, seal, lubricant and balls. Jetstream Pro Series delivers the right composition for the purpose. The JerStream Pro series offers exceptional efficiency and durability, backed by a reassuring four-year warranty for users.



G3 Ceramic Balls

G3-grade perfectly round ceramic balls create lower rotational resistance, allowing your power better to convert to speed.



NC RACE

NC Race Bearings have a Nano coating on outer & inner races. This dry film can minimize the coefficient of friction to as low as 0.03 dynamic, and 0.07 for static. The Nano Coating overcomes or reduces mechanical lubrication problems improving performance and extending service life >300%



ETERNA LV Fluid

While Supra LV is focused on pure Performance of the Pulley Wheel, Tripeak chooses a different lubricant character for the ceramic bearing Bottom Bracket: The Eterna Low Viscosity (LV) Lubricant has the characteristics to be durable reliable and keep rotation silent.



ZERO Contact Seal

ZERO Contact Seal, a non-contact bearing seal, provides complete coverage without increasing rotational resistance, striking the optimal balance between efficiency and protection.



Dura Tech

The outer race of the the Jetstream Pro Dura Tech HS is made of Teflon composite material, eliminating the corrosion of metal materials and extending the lifespan. Utilizing Teflon Compound Material and Ceramic Balls makes the Jetstream Pro DT HS not only 50% lighter than a comparable Steel Headset, it enhances the durability significantly: The CNC machined Teflon race provides an excellent lubeless rolling surface. No need for additional lubrication, no more worries about the complex process of disassembling and assembling the headset.



G5 Ceramic Balls

The ceramic bearings of the TRiPEAK C-Series utilize G5-grade ceramic balls and are paired with precisely machined steel race, delivering excellent rotational performance for riders.



Max Balls

For the high-strength requirements of structures like the suspension frame pivot point, the Max series bearings are equipped with a full complement of steel balls to provide exceptional durability and impact resistance.



P05

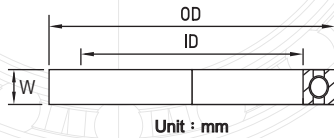
The TRiPEAK S-Series features P05 precision steel ball bearings, for reassuringly high smoothness and durability. 0.005 mm for eccentricity (out of roundness) of the track in the inner race. That's precise.



OXIDE Coating

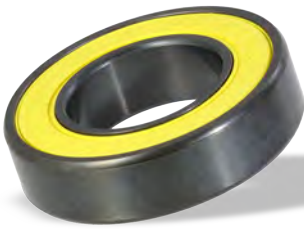
The bearings feature a black oxide coating on the inner and outer races, enhancing the weather resistance of the headset bearings and extending their lifespan.

-HUB BEARING-



OD:Outer Diameter
ID:Inner Diameter
W:Width

Unit : mm



Jetstream PRO **NEW**



G5 Ceramic



Chrome Steel



| ID | OD | H | NO. | Jetstream PRO | Ceramic Hybrid | Chrome Steel | ID | OD | H | NO. | Jetstream PRO | Ceramic Hybrid | Chrome Steel |
|-----|------|-----|---------|---------------|----------------|--------------|------|----|-----|--------|---------------|----------------|--------------|
| 6 | 15 | 5 | #606 | | | ● | 17 | 23 | 4 | #6703 | | ● | ● |
| 6.3 | 15.8 | 4.9 | #R4 | | | ● | 17 | 26 | 5 | #6803 | ● | ● | ● |
| 8 | 16 | 5 | #688 | | ● | ● | 17 | 26 | 7 | #63803 | | | ● |
| 8 | 22 | 7 | #608 | | ● | ● | 17 | 26 | 10 | #3803 | | | ● |
| 9 | 17 | 5 | #689 | | ● | | 17 | 28 | 7 | #17287 | ● | ● | ● |
| 9 | 20 | 6 | #699 | | ● | ● | 17 | 30 | 7 | #6903 | ● | ● | ● |
| 9 | 22 | 7 | #9227 | | ● | ● | 17 | 35 | 10 | #6003 | | | ● |
| 9 | 24 | 7 | #609 | | ● | ● | 18 | 28 | 7 | #18287 | | ● | ● |
| 9.5 | 22.2 | 7.1 | #R6 | | | ● | 18 | 30 | 7 | #18307 | | ● | ● |
| 10 | 19 | 5 | #6800 | | ● | ● | 19 | 28 | 5 | #19285 | | | ● |
| 10 | 19 | 7 | #63800 | | | ● | 20 | 27 | 4 | #6704 | | | ● |
| 10 | 22 | 6 | #6900 | | ● | ● | 20 | 30 | 7 | #20307 | | | ● |
| 10 | 26 | 8 | #6000 | | ● | ● | 20 | 32 | 7 | #6804 | | ● | ● |
| 10 | 28 | 8 | #16100 | | | ● | 20 | 37 | 9 | #6904 | | ● | ● |
| 10 | 30 | 9 | #6200 | | | ● | 20 | 42 | 12 | #6004 | | | ● |
| 12 | 18 | 4 | #6701 | | | ● | 22 | 37 | 8 | #22378 | | | ● |
| 12 | 21 | 5 | #6801 | | ● | ● | 23 | 32 | 7 | #23327 | | | ● |
| 12 | 24 | 6 | #6901 | | ● | ● | 24 | 37 | 7 | #24377 | | ● | ● |
| 12 | 28 | 8 | #6001 | | ● | ● | 25 | 37 | 7 | #6805 | ● | ● | ● |
| 12 | 32 | 10 | #6201 | | | ● | 25 | 37 | 6 | #6805N | | ● | ● |
| 15 | 21 | 4 | #6702 | | ● | ● | 25 | 42 | 9 | #6905 | | | ● |
| 15 | 24 | 5 | #6802 | ● | ● | ● | 27.5 | 37 | 7 | #27537 | | | ● |
| 15 | 26 | 7 | #15267 | ● | ● | ● | 30 | 37 | 4 | #6706 | | | ● |
| 15 | 26 | 8 | #15268 | | | ● | 30 | 39 | 6.5 | #39306 | ● | ● | |
| 15 | 28 | 7 | #6902 | ● | ● | ● | 30 | 40 | 7 | #40307 | ● | ● | |
| 15 | 32 | 9 | #6002 | | | ● | 30 | 42 | 7 | #6806 | ● | ● | ● |
| 15 | 35 | 11 | #6202 | | | ● | 30 | 47 | 9 | #6906 | | | ● |
| 16 | 28 | 7 | #16287 | | | ● | 45 | 58 | 7 | #6809 | | | ● |
| 16 | 31 | 10 | #163110 | | | ● | 50 | 62 | 6 | #6710 | | | ● |
| | | | | | | | 50 | 65 | 7 | #6810 | | ● | ● |

JETSTREAM PRO

DURA

TECH HEADSET



FEAR NO SWEAT !
FEAR NO RAIN !
FEAR NO RUST !

Built to withstand sweat, dust, and the test of time.
With our durable and maintenance-free design,
enjoy worry-free rides for years to come!

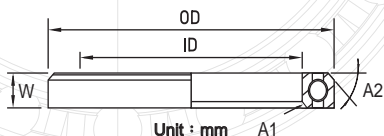
Teflon Composite Outer Race

G3 Ceramic Ball

NC Inner Race



-HEADSET BEARING-



OD: Outer Diameter
 ID: Inner Diameter
 W: Width
 A1: Inner Diameter inclination
 A2: Outer Diameter inclination



Jetstream PRO
Dura Tech

NEW



Oxide Coating



Chrome Steel



| ID | OD | H | A1 | A2 | Jetstream PRO | OXIDE Coating | Chrome Steel | ID | OD | H | A1 | A2 | Jetstream PRO | OXIDE Coating | Chrome Steel |
|------|------|-----|-----|-----|---------------|---------------|--------------|------|------|-----|-----|-----|---------------|---------------|--------------|
| 27.1 | 38 | 6.3 | 45° | 45° | | | ● | 36.8 | 45.8 | 6.5 | 45° | 45° | | | ● |
| 27.1 | 38 | 6.5 | 36° | 45° | | | ● | 37 | 46.9 | 7 | 45° | 45° | | ● | ● |
| 30 | 39 | 6.5 | 45° | 45° | | | ● | 37 | 48 | 7 | 45° | 90° | | | ● |
| 30 | 41 | 6.3 | 36° | 45° | | | ● | 37 | 48.9 | 6.5 | 36° | 45° | | ● | ● |
| 30 | 42 | 7 | 90° | 90° | | | ● | 37 | 49 | 7 | 45° | 45° | | ● | ● |
| 30 | 42 | 7 | 36° | 45° | | | ● | 40 | 51 | 6.5 | 36° | 45° | ● | ● | |
| 30.1 | 41 | 6.3 | 45° | 45° | | | ● | 40 | 51 | 6.5 | 45° | 45° | | | ● |
| 30.1 | 41 | 6.5 | 36° | 45° | | ● | ● | 40 | 51 | 7 | 45° | 45° | | | ● |
| 30.1 | 41 | 6.5 | 45° | 45° | | ● | ● | 40 | 51.5 | 7 | 45° | 45° | | | ● |
| 30.1 | 41 | 7 | 45° | 45° | | ● | ● | 40 | 51.8 | 7.5 | 36° | 45° | ● | | ● |
| 30.1 | 41 | 7.7 | 36° | 45° | | | ● | 40 | 51.8 | 7.5 | 45° | 45° | ● | | ● |
| 30.1 | 41.5 | 6.5 | 36° | 45° | | ● | | 40 | 51.8 | 8 | 36° | 45° | ● | ● | ● |
| 30.1 | 41.8 | 6.3 | 45° | 45° | | | ● | 40 | 51.8 | 8 | 45° | 45° | ● | | ● |
| 30.1 | 41.8 | 6.5 | 45° | 45° | | ● | ● | 40 | 51.9 | 7 | 45° | 45° | | | ● |
| 30.1 | 41.8 | 7 | 36° | 45° | | | ● | 40 | 51.9 | 8 | 45° | 45° | ● | ● | ● |
| 30.1 | 41.8 | 7 | 45° | 45° | | | ● | 40 | 52 | 6.5 | 36° | 45° | ● | ● | ● |
| 30.1 | 41.8 | 8 | 36° | 45° | | | ● | 40 | 52 | 6.5 | 45° | 45° | ● | ● | ● |
| 30.5 | 41.8 | 7.7 | 45° | 45° | | | ● | 40 | 52 | 7 | 36° | 45° | ● | | ● |
| 30.5 | 41.8 | 8 | 45° | 45° | | ● | ● | 40 | 52 | 7 | 45° | 45° | ● | ● | ● |
| 32.4 | 43.8 | 7 | 45° | 45° | | | ● | 40 | 52 | 8 | 45° | 45° | | | ● |
| 32.8 | 41.8 | 6 | 45° | 45° | ● | | ● | 40 | 52 | 8 | 45° | 45° | ● | | ● |
| 33 | 43.8 | 7 | 30° | 45° | | | ● | 40 | 52 | 12 | 45° | 45° | | | ● |
| 33 | 44 | 6 | 36° | 45° | | | ● | 40 | 53 | 7 | 45° | 45° | | | ● |
| 34.1 | 46 | 7 | 45° | 45° | | | ● | 40.5 | 49.5 | 6.5 | 45° | 45° | ● | ● | ● |
| 34.1 | 46.8 | 7 | 45° | 45° | | | ● | 42 | 52 | 7 | 45° | 45° | | | ● |
| 34.1 | 46.9 | 7 | 45° | 45° | | ● | ● | 46 | 60 | 8 | 45° | 45° | | | ● |
| 35 | 44 | 5 | 90° | 45° | | | ● | 50 | 61.9 | 8 | 36° | 45° | | | ● |
| 35 | 44 | 5.5 | 36° | 45° | | | ● | | | | | | | | |
| 35 | 45.3 | 7.3 | 45° | 45° | | | ● | | | | | | | | |
| 35 | 47 | 7 | 90° | 90° | | | ● | | | | | | | | |
| 35 | 47 | 7 | 36° | 45° | | | ● | | | | | | | | |
| 35 | 47 | 8 | 45° | 45° | | | ● | | | | | | | | |

● I.D. with small lip
 ● Stainless steel
 ● 1RS (Rubber seal)

-TOOLS-



NEW

EMA-TT-B008A
Twist-Fit BB set / Bearing replacement tool kits



EMA-TT-W002
Hub bearing puller
Bearing ID
8/9/10/12/15/17/20mm compatible



EMA-TT-W003
Hub bearing installation kits
Bearing ID
8/9/10/12/15/17/20/25mm compatible



NEW

EMA-TT-B015
TRIPEAK BB CUP Wrench
OD44mm-16Notch(Shimano spec)
&
OD50mm-12Notch(TRIPEAK spec)



EMA-TT-B012SA
TRIPEAK Tool (B012S) cartridge wrench
For SRAM IB30 BB installation adapter



EMA-TT-B011S
TRIPEAK BB CUP wrench (Metal)
For IB24 series compatible



EMA-TT-B012S
TRIPEAK BB CUP wrench (Metal)
For IB30 series compatible



EMA-TT-B012
TRIPEAK BB cartridge wrench (PA+GF)
IB30 series compatible



EMA-TT-B001
Bearing replacement tool kit
For Integrated BB set (BB86 / PF30)



EMA-TT-B003
TRIPEAK BB CUP Wrench
For IB24 / IB30 Series Compatible



TEL:+886-4-2463-6319

FAX:+886-4-2463-6382

WEB:<https://tripeakbearing.com/>

ADD:1F., No. 30, Hongfu 1st Ln., Sec. 3, Xitun Rd., Xitun Dist., Taichung City 40764, Taiwan (R.O.C.)

